

# FACILITIES USE REFERENCE GUIDE



ROMAN CATHOLIC CHURCH IN THE STATE OF HAWAII  
**DIocese of HONOLULU**  
WITNESS TO JESUS

*Aloha,*

As a busy parish/school, you often have questions about the use of the campus. This guide is designed to help you answer the essential questions that begin with the request and end with the actual use. Before you can get started, there are several key issues that need review. This will help to get you through the process and arrive at a successful outcome. Each of these circumstances assumes that there is some exchange of value, either predetermined money or a service in lieu of money. As these requests sometimes involve non-standard circumstances, you are encouraged to call the Real Estate Director's Office for clarifications and further guidance.

Mahalo,

Marlene R. De Costa  
Real Estate Director (RED)

*Let's get started*

## THREE REASONS WHY THIS IS IMPORTANT

There are 3 underlying issues that are to be considered in the use, no matter if the duration is for one day or multiple years. These are:



### PUBLIC ACCOMMODATION

Catholic parishes/schools are NOT defined as places of public accommodation. These facilities are meant only for those whom are the primary beneficiaries: parishioners, students, etc. At all times, respect of the principles of our faith are to be honored in the use of our facilities.



### NON-PROFIT ENTITIES

Parishes/schools are exempt from Federal/State/County real estate and income tax. This exemption allows only the business of the church/school to be conducted. It is not meant to allow other types of uses, unless the other entity is a non-profit and qualifies for its own exemption.



### ZONING

Parishes/schools are on land that is categorized by the Counties in different types of zones. Most of our churches/schools are on land that is zoned Business, Agriculture or Residential. In all of these various zonings, there are only certain types of allowed uses.

#### REFERENCE MATERIAL & REQUIRED FORMS



#### ACRONYM LEGEND:

RCCH - ROMAN CATHOLIC CHURCH  
IN THE STATE OF HAWAII

RED - REAL ESTATE DIRECTOR



## ONE TIME EVENTS

Outlined in the yellow box are examples of the kind of One Time Events that this section covers. These events are usually held on one day or a series of days, but the event is short in duration: a day, a weekend, a week. This does not cover repetitious events that happen one day a week, which is discussed in the next section.

### EXAMPLES

- Fundraisers by others (e.g. Girl Scout cookie sale, Boy Scouts)
- Craft fairs
- Food truck event
- Special event parking (e.g. private school carnival, tournament, athletic event parking)
- Sporting events (e.g. clinics, marathons)
- Community event (e.g. kupuna care, financial planning)
- TV/movie taping



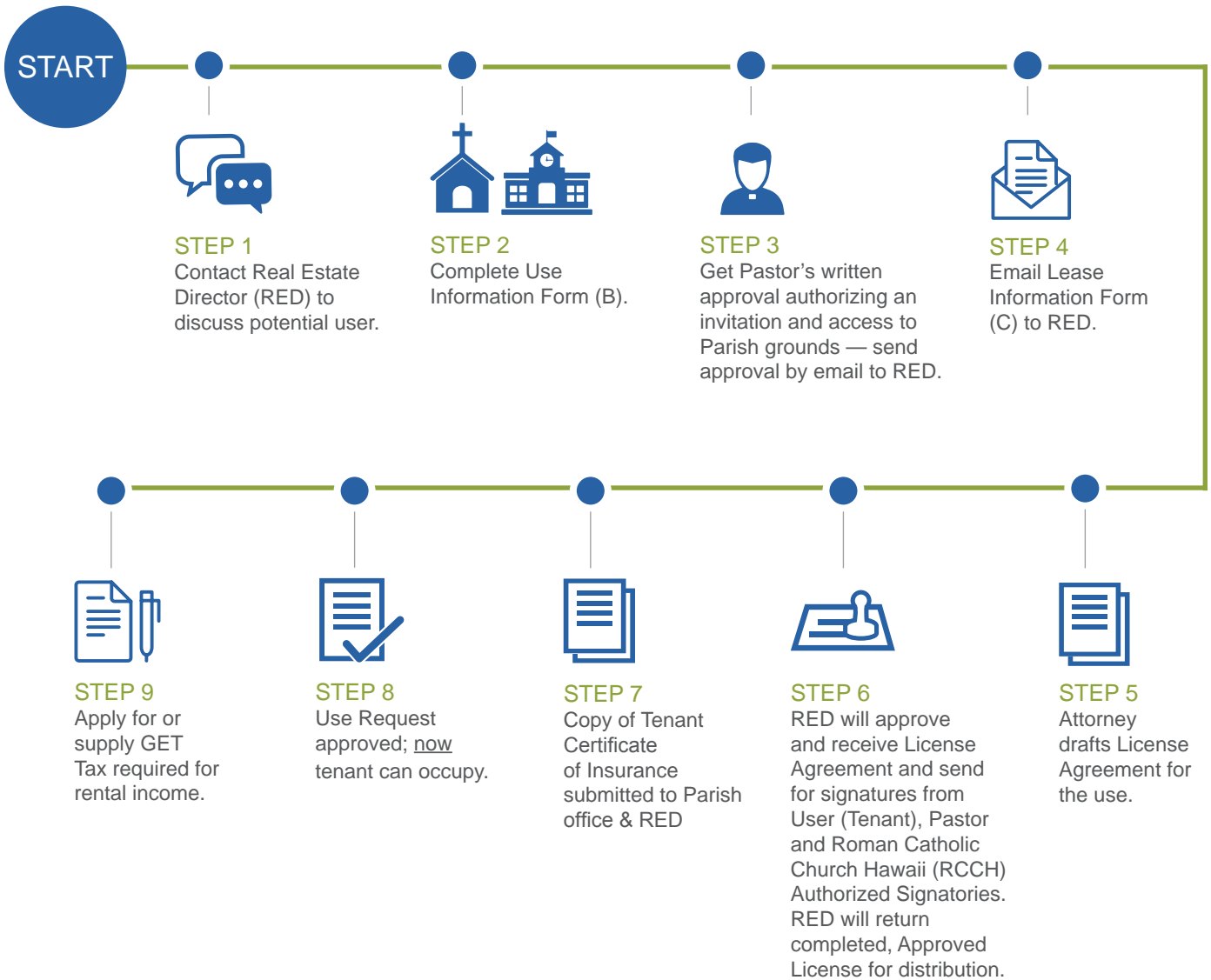


## SHORT TERM USE

Outlined in the yellow box are examples of the kind of Short Term Uses that this section covers. These events are repetitive and have a duration of several days to less than one year.

### EXAMPLES

- Gym use: (e.g. volleyball/ basketball clubs)
- Parish Hall: (e.g. Zumba, martial arts, music and dance classes)
- General meetings
- Summer programs
- Farmers markets
- After school programs (e.g. piano, hula, Kumon) which must be renewed each year
- Parking lot rental
- Commercial kitchen use



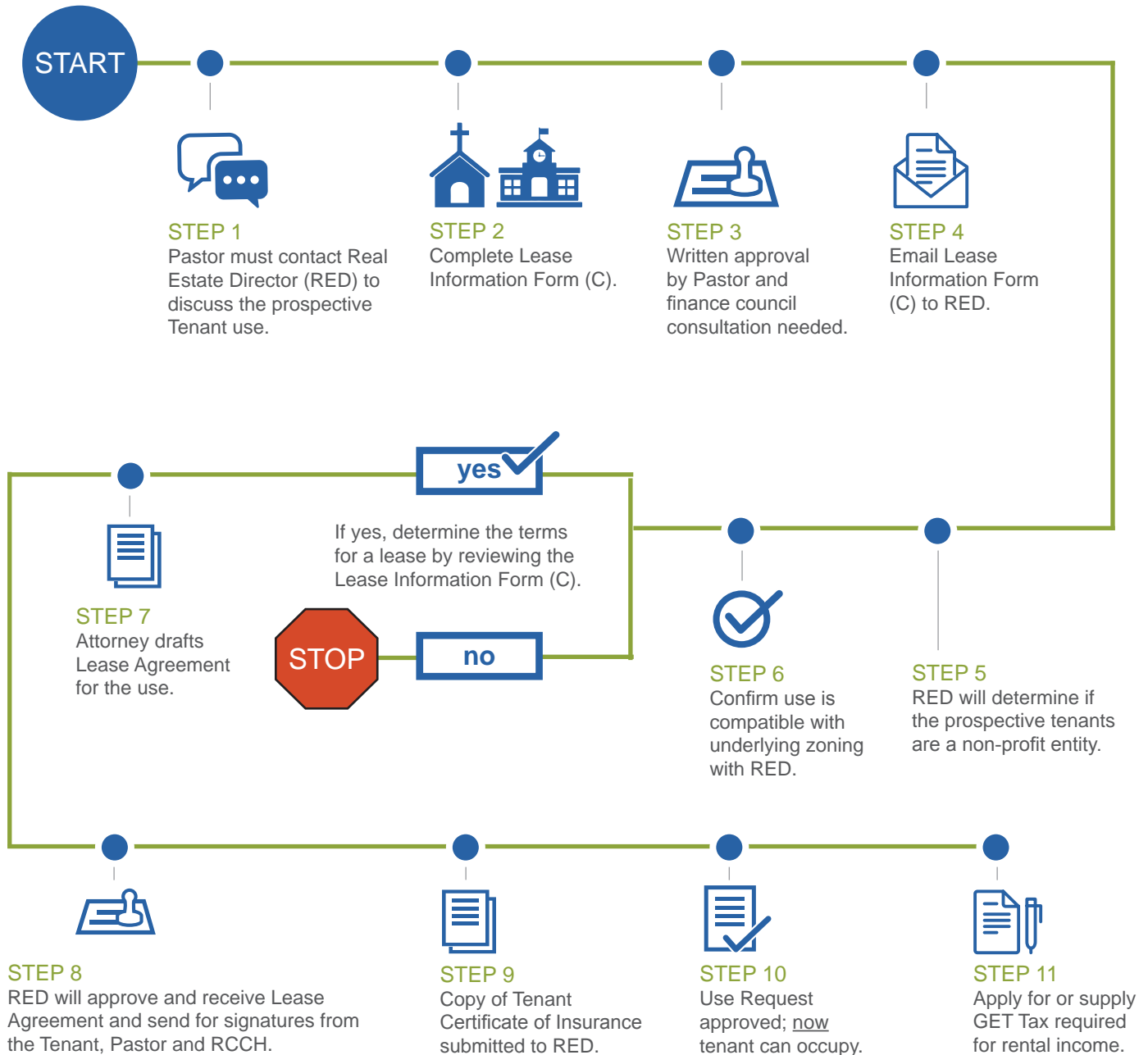


## LONG TERM USE

Outlined in the yellow box are examples of the kind of Long Term Uses that this section covers. These events are repetitive and have a duration of one year to several years.

### EXAMPLES

- Commercial kitchen cooking distribution
- Boys & Girls Club
- Preschools
- Charter schools
- Day care (e.g. child, kupuna)
- General office
- Cell phone towers
- Residences
- Parking lot
- Other denomination churches (must clear with Bishop directly)



## CONTACT US

### **MARLENE R. DE COSTA, CPM, RPA**

**Director of Real Estate**

1184 Bishop Street  
Honolulu, HI 96813

T: 585.3332

C: 228.7905

F: 521.8428

[mdecosta@rcchawaii.org](mailto:mdecosta@rcchawaii.org)

### **ALICIA NAKAMOTO**

**Parish/School Accounting Manager**

1184 Bishop Street  
Honolulu, HI 96813

T: 585.3310

[anakamoto@rcchawaii.org](mailto:anakamoto@rcchawaii.org)

**CATHOLICHAWAII.ORG**



ROMAN CATHOLIC CHURCH IN THE STATE OF HAWAII  
**DIocese OF HONOLULU**  
WITNESS TO JESUS